

BONET[®]
Gripping Force Since 1981

STRONGER GRIP
HIGH ACCURACY
VALUE FOR MONEY
LONG SERVICE LIFE



SELF CENTERING CHUCKS



INDEPENDENT CHUCKS

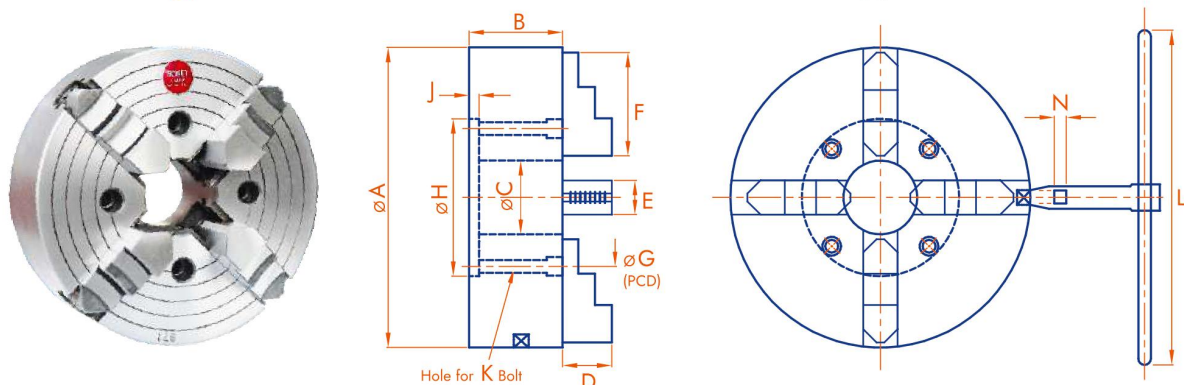
FACE PLATE JAWS



Precision Above Expectations !!

BONMAC[®]
Gripping Force Since 1981

BONET 4 - JAW INDEPENDENT CHUCKS ||



BONET Extra Light Duty 4 - Jaw Independent Chucks ||

- * Chucks with slim bodies , specially designed for Small Lathes and Grinding Machines, where spindle accuracy is most important.
- * Bodies of 2.5", 3" and 4" sizes are made out of STEEL.
- * Bodies from 5" are made out of Spheroidal Graphite (SG) Iron. Bodies are break resistant under normal working conditions.
- * Screws have stronger 29° taper ACME thread which do not break easily.
- * Screws, Thrust Bearings and Operating Keys are manufactured out of ALLOY STEEL. Same are properly heat treated to obtain long service life.
- * Operating Key, Mounting Bolts, Allen Key, Tap & Inspection Report is provided with each Chuck.

Product Code	Size	A	B	C (Bore)	D	E	F	G (PCD)	H (H7)	J	K	L	N	Weight in Kgs. (Approx.)
5191-2.5	2.5"	62	35	13.5	13	12.0	28	45.0	55.0	2.5	M5	80	5	1.25
5191-3	3"	82	35	19.0	16	12.0	35	60.0	70.0	2.5	M6	100	5	1.5
5191-4	4"	101	35	25.4	16	12.0	35	76.2	88.9	2.5	M8	115	5	2.0
5291-5	5"	130	45	25.4	20	15.7	51	60.0	70.0	3.0	M8	165	7	4.0
5291-6	6"	152	45	40.0	20	15.7	51	69.8	82.5	3.0	M8	165	7	4.6
5291-8	8"	203	50	45.0	24	19.0	63	82.5	95.25	3.5	M10	215	7.5	8.7
5291-10	10"	254	69	50.0	29	25.4	83	111.0	127.0	5.0	M10	285	9	18.5

BONET Extra Heavy Duty 4 - Jaw Independent Chucks ||

- * Specially designed for Heavy Turning Operations. These chucks will provide long, trouble free life even under worst working conditions.
- * Screws have extra large diameter which provides increased gripping power. Screws have Stronger 29° taper ACME thread.
- * Chucks above 6" diameter have double thrust bearings to cope with heavy cutting forces.
- * Screws, Thrust Bearings and Operating Keys are manufactured out of ALLOY STEEL. Same are properly heat treated for long service life.
- * Operating Key, Mounting Bolts, Allen Key, Tap & Inspection Report is provided with each Chuck.

Product Code	Size	A	B	C (Bore)	D	E	F	G (PCD)	H (H7)	J	K	L	N	Weight in Kgs. (Approx.)
5092-6	6"	152	78	45	25	23.9	55	105	127	6	M10	165	8	9.4
5092-8	8"	203	98	50	43	30.1	80	110*	85*	6	M10	215	10	18.4
5092-10	10"	254	98	60	43	34.9	95	126*	100*	8	M12	285	11	25.8
5092-12	12"	305	105	75	55	38.1	115	140	160	10	M12	350	12	38.9
5092-14	14"	355	105	85	55	38.1	115	155	175	10	M12	350	12	50.0
5092-16	16"	406	110	100	65	44.5	145	175	200	10	M16	450	13	68.9
5092-18	18"	457	110	115	65	44.5	145	175	200	10	M16	450	13	80.6

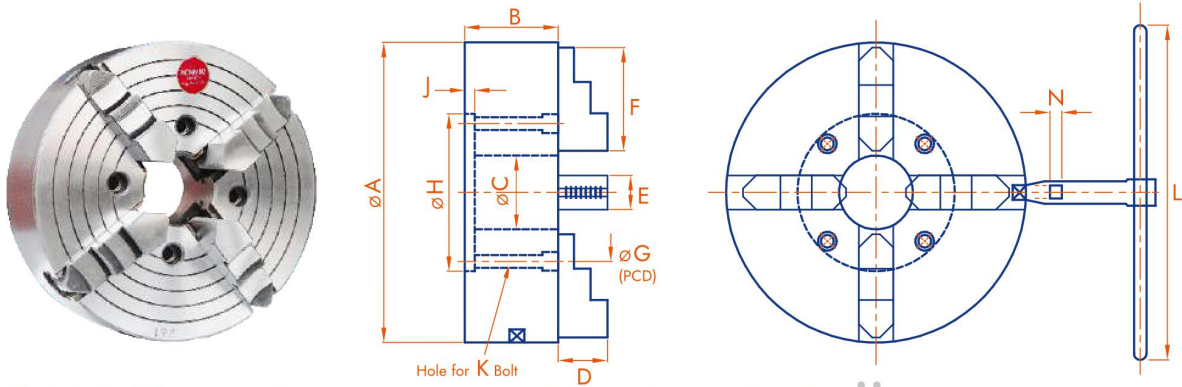
* The mounting bolts in these sizes are outside mounting recess. Due to this G and H dimensions appear wrong as per diagram.

BONET BIG BORE Extra Heavy Duty 4 - Jaw Independent Chucks ||

Product Code	Size	A	B	C (Bore)	D	E	F	G (PCD)	H (H7)	J	K	L	N	Weight in Kgs. (Approx.)
5094-12	12"	305	105	100	55	38.1	115	160*	140*	10	M12	350	12	37.0
5094-14	14"	355	105	125	55	38.1	115	200*	175*	10	M12	350	12	48.0
5094-16	16"	406	110	150	65	44.5	145	225*	200*	10	M16	450	13	66.0
5094-18	18"	457	110	150	65	44.5	145	225*	200*	10	M16	450	13	77.0

* The mounting bolts in these sizes are outside mounting recess. Due to this G and H dimensions appear wrong as per diagram.

BONMAC 4 - JAW INDEPENDENT CHUCKS ||



BONMAC Heavy Duty 4 - Jaw Independent Chucks ||

- * These chucks will provide long, trouble free life under normal conditions of service.
- * Screws have extra large diameter which provides increased gripping power. Screws have Stronger 29° taper ACME thread.
- * Chucks above 6" diameter have double thrust bearings to cope with heavy cutting forces.
- * Screws, Thrust Bearings and Operating Keys are properly heat treated for long service life.
- * Operating Key, Mounting Bolts & Inspection Report is provided with each Chuck.

Product Code	Size	A	B	C (Bore)	D	E	F	G (PCD)	H (H7)	J	K	L	N	Weight in Kgs. (Approx.)
6093-80	80	82	45	20	20	12.0	32	60	70	4	M6	115	5	1.8
6093-100	100	102	55	25.4	22	19.0	48	70	85	5	M8	140	7	3.0
6093-125	125	125	55	32	22	19.0	48	80	100	5	M8	140	7	4.5
6093-160	160	160	75	45	24	23.9	55	138*	120*	6	M10	165	8	9.0
6093-200	200	200	87	50	38	29.9	80	100*	80*	6	M10	250	10	15.4
6093-250	250	250	87	60	38	29.9	95	110	130	8	M10	250	10	21.6
6093-305	305	305	95	75	50	34.9	115	140	160	10	M12	350	12	36.2
6093-350	350	350	95	85	50	34.9	115	140	160	10	M12	350	12	42.7
6093-400	400	400	105	100	60	40.7	145	175	200	12	M16	450	13	64.0
6093-450	450	450	105	115	60	40.7	145	175	200	12	M16	450	13	76.3
6093-510	510	510	115	140	66	47.0	170	235	260	12	M20	520	14	113.5
6093-610	610	610	115	160	66	47.0	170	235	260	12	M20	620	14	133.5

* The mounting bolts in these sizes are outside mounting recess. Due to this G and H dimensions appear wrong as per diagram.

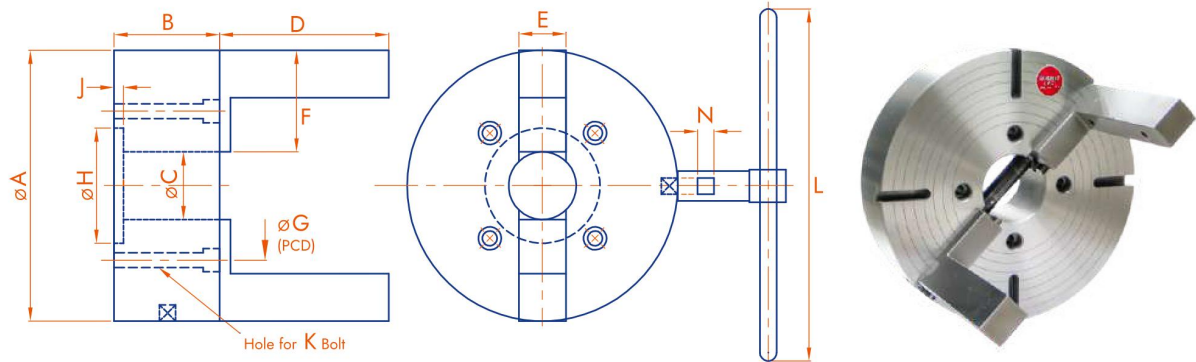
BONMAC BIG BORE Heavy Duty 4 - Jaw Independent Chucks ||

Product Code	Size	A	B	C (Bore)	D	E	F	G (PCD)	H (H7)	J	K	L	N	Weight in Kgs. (Approx.)
6094-305	305	305	95	100	50	34.9	115	160*	140*	10	M12	350	12	35.0
6094-350	350	350	95	125	50	34.9	115	180*	160*	10	M12	350	12	41.3
6094-400	400	400	105	150	60	40.7	145	230*	200*	12	M16	450	13	62.5
6094-450	450	450	105	150	60	40.7	145	230*	200*	12	M16	450	13	74.3
6094-450E	450	450	105	210	60	40.7	145	280*	245*	12	M16	450	13	71.3
6094-510	510	510	115	180	66	47.0	170	235	260	12	M20	520	14	108.0
6094-510E	510	510	115	210	66	47.0	170	320*	260*	12	M20	520	14	105.0
6094-510EE	510	510	115	250	66	47.0	170	320*	270*	12	M20	520	14	100.0
6094-610	610	610	115	180	66	47.0	170	235	260	12	M20	620	14	122.0
6094-610E	610	610	115	210	66	47.0	170	320*	260*	12	M20	620	14	118.0
6094-610EE	610	610	115	250	66	47.0	170	320*	270*	12	M20	620	14	112.0

* The mounting bolts in these sizes are outside mounting recess. Due to this G and H dimensions appear wrong as per diagram.

BONMAC 2 - JAW SCREW OPERATED SELF CENTERING CHUCKS

These are special 2-Jaw self centering chucks. This self centering mechanism is made with the help of one screw which has left hand thread on one side and right hand thread on other side. This mechanism moves both the jaws simultaneously. The height of jaws is more than normal chucks. Threaded holes are provided on jaws. Upper portion of these jaws are kept soft so that machining or welding can be done. Special type of fixture can be mounted on the jaws to suit special jobs. These chucks are not as accurate as scroll operated self centering chucks, but these can tolerate heavy load. These are generally used for TAPS manufacturing industry. Operating Key, Mounting Bolts are provided with each Chuck.

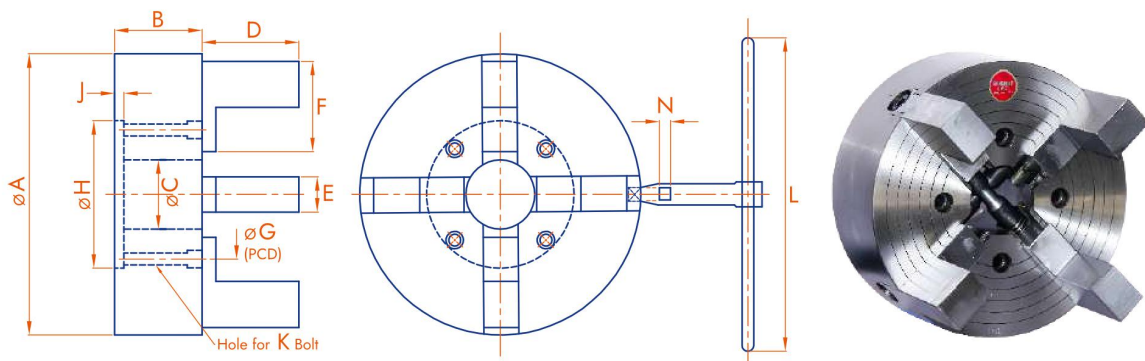


Product Code	Size	A	B	C (Bore)	D	E	F	G (PCD)	H (H7)	J	K	L	N	Weight in Kgs. (Approx.)
6096-160	160	160	95	-	90	34.9	55	138	120	5	M10	285	12	14.4
6096-200	200	200	95	-	110	34.9	75	138	120	5	M10	285	12	21.3
6096-250	250	250	101	-	130	40.7	85	110 *	130 *	8	M12	320	13	33.0
6096-305	305	305	101	75	160	40.7	100	140 *	160 *	10	M12	350	13	44.2
6096-350	350	355	101	85	185	40.7	110	155 *	175 *	10	M12	350	13	56.8
6096-400	400	406	107	100	200	44.5	125	175 *	200 *	10	M16	450	13	72.0

* The mounting bolts in these sizes are outside mounting recess. Due to this G and H dimensions appear wrong as per diagram.

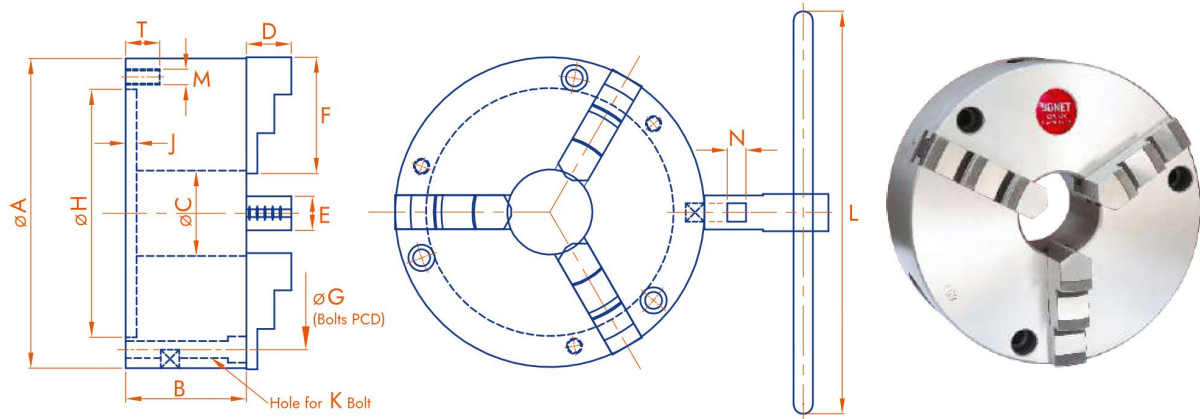
BONMAC 4 - JAW SCREW OPERATED SELF CENTERING CHUCKS

These are special 4-Jaw self centering chucks. This self centering mechanism is made with the help of screws which have left hand thread on one side and right hand thread on other side. This mechanism moves two jaws simultaneously. The height of jaws is more than normal chucks. Threaded holes are provided on jaws. Upper portion of these jaws are kept soft so that machining or welding can be done. Special type of fixture can be mounted on the jaws to suit special jobs. These chucks are not as accurate as scroll operated self centering chucks, but these can tolerate heavy load. These are generally used for YOKES manufacturing industry. Operating Key, Mounting Bolts are provided with each Chuck.



Product Code	Size	A	B	C (Bore)	D	E	F	G (PCD)	H (H7)	J	K	L	N	Weight in Kgs. (Approx.)
6099-250	250	250	115	-	90	34.9	85	110	130	8	M12	320	13	31.6
6099-305	305	305	125	-	105	38.1	100	140	160	10	M12	350	13	51.8

BONET SELF CENTERING CHUCKS ||



BONET Standard Self Centering Chucks ||

BONET Self Centering Chucks are manufactured out of high quality materials. The bodies are made of alloyed high strength cast iron. All other parts are made of special steels which are properly tested chemically and physically before use. These parts are then suitably heat treated and pass through stringent quality control tests, which ensure long service life. One set of Reverse Jaws, Mounting Bolts, Operating Key and an Inspection Report is provided with each chuck.

Product* Code	Size	A	B	C (Bore)	D	E	F	G (PCD)	H (H7)	J	K/M	L	N	T	Wt. in Kgs. (Approx.)	
															3 - Jaw	4 - Jaw
5001-803	80	83	45	19	13	12	29	71.3	63.5	3	M5	140	6	12	2.1	2.2
5001-1003	100	103	52	26	17	15	37	89	76.2	3	M6	175	8	12	3.3	3.4
5001-1253	125	125	55	35	19	16	45	108	95	4	M8	175	8	15	4.4	4.5
5001-1603	160	160	70	42	24	20	65	140	125	6	M10	215	10	20	9.2	9.6
5001-2003	200	200	78	55	29	22	80	176	160	7	M10	285	12	22	15.6	16.2
5001-2003EH	200	200	80	55	29	29	95	176	160	7	M10	285	12	22	17.2	18.5
5001-2503	250	250	86	76	35	29	95	224	200	7	M12	315	13	25	26.2	27.5
5001-2703	270	270	86	90	35	29	95	245	220	7	M12	315	13	-	29.0	30.2
5001-3153	315	315	88	105	42	32	109	286	260	7	M12	350	13	-	40.5	42.4

* Product Code is for 3 - Jaw Chuck having cast iron body. For 4 - Jaw chuck last numeric is 4.

** Extra Heavy Duty.

BONET Big Bore Self Centering Chucks ||

Product* Code	Size	A	B	C (Bore)	D	E	F	G (PCD)	H (H7)	J	K/M	L	N	T	Wt. in Kgs. (Approx.)	
															3-Jaw	4-Jaw
5003-1603	160	160	70	52	24	20	65	140	125	6	M10	215	10	20	9.0	9.4
5003-2003	200	200	78	76	29	22	80	176	160	7	M10	285	12	22	15.4	16.0
5003-2503	250	250	86	90	35	29	95	224	200	7	M12	315	13	25	25.5	26.8
5003-2703	270	270	86	105	35	29	95	245	220	7	M12	315	13	-	28.0	29.2
5003-3153	315	315	88	130	42	32	109	286	260	7	M12	350	13	-	38.5	40.4
5003-3153E	315	315	88	155	42	32	109	286	260	7	M12	350	13	-	34.5	38.5

* Product Code is for 3 - Jaw Chuck having cast iron body. For 4 - Jaw chuck last numeric is 4.

** Extra Heavy Duty.

ADAPTER PLATES / MOUNTING FLANGES



**A2
Series**



**D1
Series**



**L1
Series**



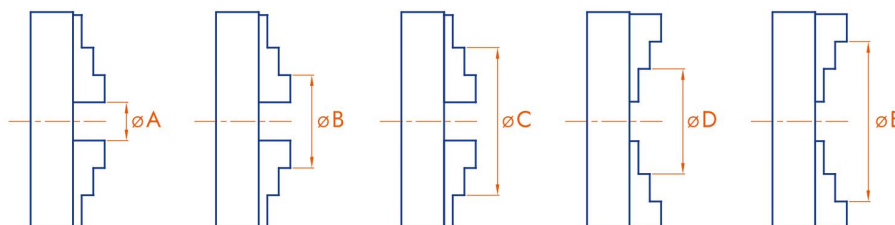
**MT
Series**

Model	Taper Dia. at Large End	Sizes / Product Code *							
		160	200	250	315	400	460	500	610
A2 - 4	63.513	5017-160	5017-200	5017-250	—	—	—	—	—
A2 - 5	82.563	5018-160	5018-200	5018-250	—	—	—	—	—
A2 - 6	106.375	—	5019-200	5019-250	5019-315	5019-400	—	—	—
A2 - 8	139.719	—	5020-200	5020-250	5020-315	5020-400	5020-460	5020-500	5020-610
A2 - 11	196.869	—	—	5021-250	5021-315	5021-400	5021-460	5021-500	5021-610
D1 - 4	63.513	5026-160	5026-200	5026-250	—	—	—	—	—
D1 - 5	82.563	5027-160	5027-200	5027-250	—	—	—	—	—
D1 - 6	106.375	—	5028-200	5028-250	5028-315	5028-400	—	—	—
D1 - 8	139.719	—	5029-200	5029-250	5029-315	5029-400	5029-460	5029-500	5029-610
D1 - 11	196.869	—	—	5030-250	5030-315	5030-400	5030-460	5030-500	5030-610
L1	104.750	—	5013-200	5013-250	5013-315	5013-400	—	—	—

* Product code is for cast iron plates. For steel plates, replace second digit 0 with 1.

Model	Taper Dia. at Large End	Sizes / Product Code				
		80	100	125	160	200
MT - 3	23.825	5136-80	5136-100	5136-125	5136-160	5136-200
MT - 4	31.267	5137-80	5137-100	5137-125	5137-160	5137-200
MT - 5	44.369	5138-80	5138-100	5138-125	5138-160	5138-200

GRIPPING CAPACITY AND MAX. RPM - Self Centering Chucks



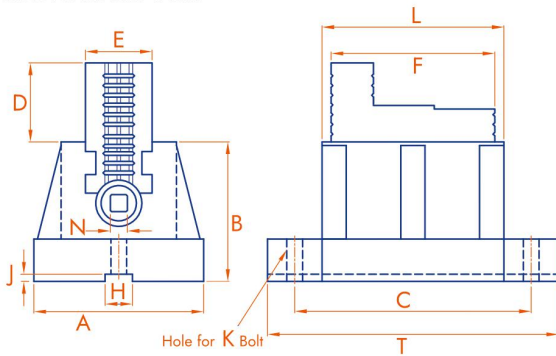
Size	A		B		C		D		E		Max. RPM	
	Min.	Max.	Min.	Max.	Min.	Max.	Min.	Max.	Min.	Max.	CI Body	Steel Body
80	2	27	22	45	40	69	24	50	40	71	3000	4000
100	3	33	25	60	55	87	32	70	60	93	2500	3800
125	3	42	34	80	70	112	38	90	80	120	2000	3200
160	3	68	42	105	90	154	48	110	100	160	1700	2500
200	4	90	52	130	110	194	60	140	120	200	1300	2000
250	5	110	62	165	120	240	75	170	145	250	1100	1600
270	7	130	70	185	135	260	85	195	155	270	1000	1500
315	10	180	80	210	150	300	96	225	165	315	800	1300

GRIPPING CAPACITY AND MAX. RPM - Independent Chucks

Size	60	80	100	125	160	200	250	305	350	400	450	510	610
Min. Gripping Capacity	2	3	4	4	6	12	18	18	18	25	25	55	55
Max. Gripping Capacity	60	80	100	125	160	200	250	305	350	400	450	510	610
Max. RPM CI Body	1200	1200	1200	1200	1200	1200	1100	900	800	700	600	500	400
Max. RPM STEEL Body	1700	1700	1700	1700	1700	1700	1500	1200	1100	950	800	700	550

BONMAC Heavy Duty Single Type Face Plate Jaws

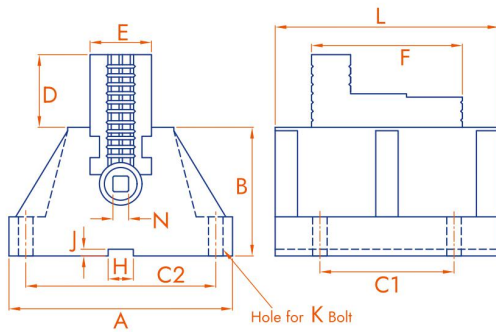
These are Single Type Face Plate Jaws having Cast Iron Bodies. There are two holes for mounting the same. These can be mounted on face plates of lathes or on table for further work.



Product Code	Size	L	A	T	C	B	E	D	F	H	J	K	N	Weight in Kgs. (Approx.)
6097-150	150	150	140	240	195	115	55	65	135	22	6	M16	14	18.5
6097-200	200	200	140	290	245	115	55	65	135	22	6	M16	14	22.5

BONMAC Heavy Duty Double Type Face Plate Jaws

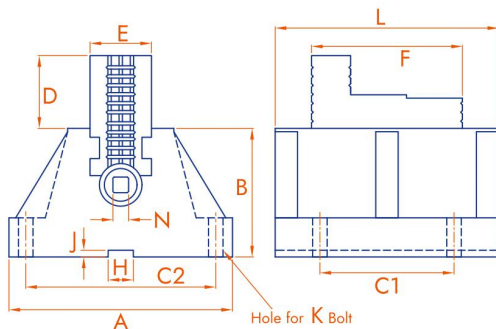
These are Double Type Face Plate Jaws having Cast Iron Bodies. There are four holes for mounting the same. These can be mounted on Face Plates of Lathe Machines or on VMC Tables for Work Holding.



Product Code	Size	L	A	B	E	D	F	H	J	N	C1	C2	K	Weight in Kgs. (Approx.)
6098-150	150	150	200	115	55	65	135	22	6	14	95	170	M16	20.5
6098-200	200	200	200	115	55	65	135	22	6	14	120	170	M16	26.5
6098-250	250	250	200	115	55	65	135	22	6	14	150	170	M16	30.5

BONMAC Extra Heavy Duty Vertical Turning Lathe Jaws

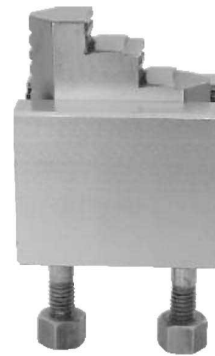
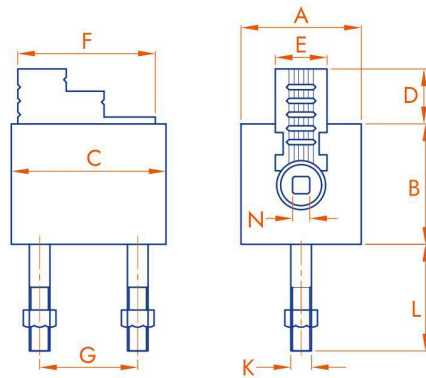
These Face Jaws will give trouble free service under extreme working conditions. These are generally used on Vertical Turning Lathes where large parts are to be mounted and heavy cuts are applied. Operating Key and Stud is provided with each jaw.



Product Code	Size	L	A	B	E	D	F	H	J	N	C1	C2	K	Weight in Kgs. (Approx.)
6090-250	250	250	230	145	65	52	210	22	6	19	125	180	M20	45.0

BONET Light Duty Face Plate Jaws Steel Body ||

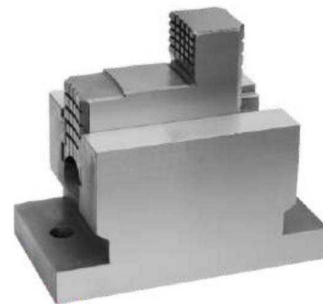
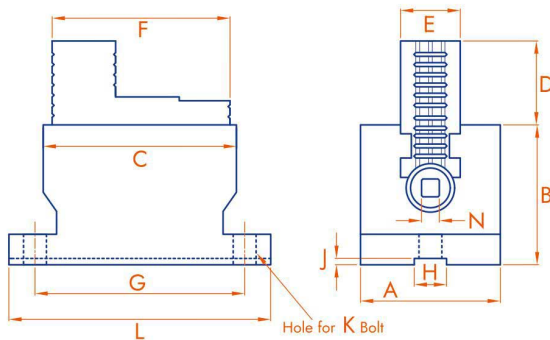
These are Light Duty Face Plate Jaws having Steel Bodies. These can be mounted on face plates of lathes or on table for further work.



Product Code	Size	A	B	C	D	E	F	G	K	L	N	Weight in Kgs. (Approx.)
5195-90	90	70	70	90	35	30.1	80	57.1	M12	62	10	4.0

BONET Extra Heavy Duty Face Plate Jaws Steel Body ||

These are Heavy Duty Face Plate Jaws having Steel Bodies. These can be mounted on face plates of lathes or on table for further work.



Product Code	Size	L	A	B	C	D	E	F	G	H	J	K	N	Weight in Kgs. (Approx.)
5195-150	150	205	110	110	150	66	47.0	140	162	22	6	M18	14	18.0
5195-200	200	260	110	110	200	66	47.0	140	213	22	6	M18	14	22.5

SPECIAL TYPE OF CHUCKS ||

- **Crank Shaft Grinder Chucks:** Used for gripping Crank Shafts.
- **Bearing Races Chucks:** Used for gripping Bearing Rings.
- **5 - Jaw Self Centering Chucks:** Used for holding jobs from 5 sides.
- **Cam Holding Self Centering Chucks:** Used for holding Cams.
- **Eccentric Self Centering Chucks:** Used for holding odd shape items.

Customized Jaws can also be provided as per Customer's requirement.

All dimensions are in millimetres unless specified. Due to continuous improvements, the dimensions are subject to change without prior notice. All products carry warranty of one year against manufacturing defects only.

BONET MACHINE TOOLS

Rurka Road, Goraya -144 409 (Distt. Jalandhar) (Punjab) (INDIA)

Stockist :



**SAI TRUMAN™
ENTERPRISES**

☎ 09890189891 / 09373906969 / 09284480807
✉ info@saitruman.in 🌐 www.saitruman.in

Shop No. 8, Plot No. 86-74, Jay Tulja Bhavani Industrial Complex, Near Corporation Bank,
Opp. Century Enka, Telco Road, MIDC Bhosari, Pune - 411026, Maharashtra, India

BMT/CF/01